



LOAD MANAGEMENT IN PUBLIC AND COMMERCIAL SPACES

ACOREL offers a load management and safety gauge solution for all public places.

YOU WANT TO :

- > Know at what times of the day the traffic peaks?
- > Know the distribution of the flow of people on the different accesses?
- > Reassure your visitors and allow them to choose their visiting hours?
- > Analyse whether the opening hours are adapted to visitors' needs?
- > Measure the impact of my promotional actions?
- > Have accurate data to optimise resource allocation and communicate with your customers?



APPLICATIONS



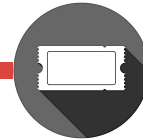
SHOPS



SHOPPING
MALLS



SMART
BUILDING



LEISURE
PARKS



MUSEUMS

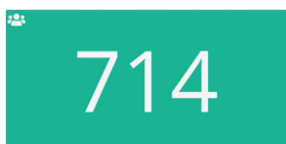
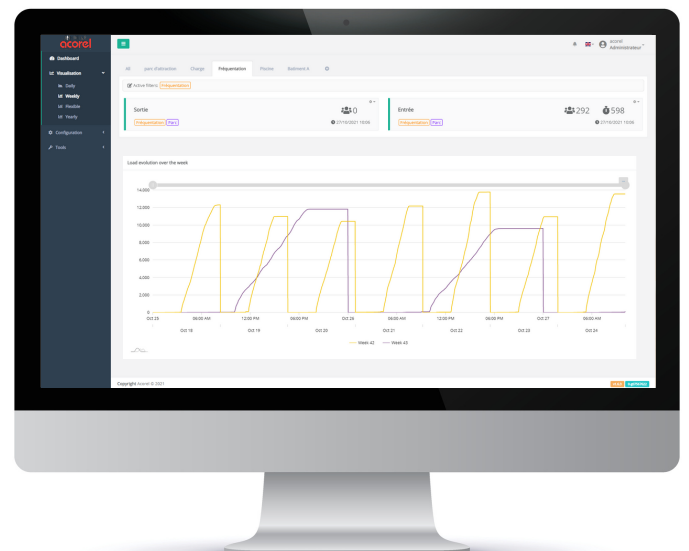
The VISION software allows the user to visualise the load data in real time, but also to have historical data on the attendance of establishments open to the public.

Turnkey solution, simple and quick to install

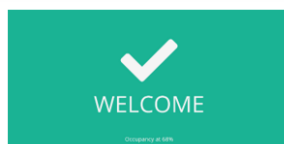
Real-time capacity measurement

Automatic capacity alerts by sms / email when thresholds are exceeded

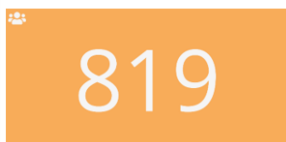
Can be integrated with an informative display screen



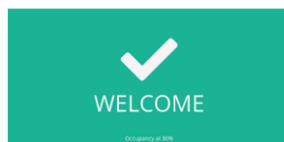
Load (gauge) with threshold information
Alert (#1) and maximum (#2) thresholds not reached



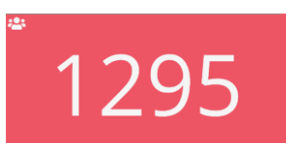
Stop & Go: invitation to enter
Alert (#1) and maximum (#2) thresholds not reached



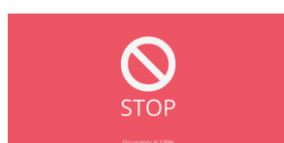
Load (gauge) with threshold information
Alert threshold (#1) reached, maximum threshold (#2) not reached



Stop & Go: invitation to enter
Alert threshold (#1) reached, maximum threshold (#2) not reached



Load (gauge) with threshold information
Alert (#1) and maximum (#2) thresholds reached



Stop & Go: invitation not to enter
Alert (#1) and maximum (#2) thresholds reached

